



Environmental Resource Center®



Seminars

Webcasts

Online

Consulting

[www.environmentalresourcecenter.com](http://www.environmentalresourcecenter.com)

# Contents

## Seminars

Hazardous Waste Management: The Complete Course.....	6
Texas Hazardous Waste Management .....	8
California Hazardous Waste Management .....	9
DOT Hazardous Materials Training: The Complete Course.....	10
RCRA and DOT Annual Update and Refresher.....	12
IATA: How to Ship Dangerous Goods by Air .....	14
DOT/IATA: How to Ship Dangerous Goods by Ground and Air .....	15
SARA Title III (EPCRA) Workshop.....	16
Advanced Hazardous Waste Management.....	18
HAZWOPER 24-Hour and 40-Hour Workshops and 8-Hour Refresher .....	20

## Webcasts

DOT Hazardous Materials Training: The Complete Course.....	22
DOT Hazardous Materials Update .....	22
Hazardous Waste Management: The Complete Course.....	22
Hazardous Waste Management Annual Update.....	22
RCRA and DOT Annual Update and Refresher.....	23
IATA: How to Ship Dangerous Goods by Air .....	23
IATA Dangerous Goods Update.....	23
DOT/IATA: How to Ship Dangerous Goods by Ground and Air .....	24
How to Ship Dangerous Goods by Vessel – IMDG .....	24
How to Ship Infectious Substances by Ground and Air .....	24
How to Ship Batteries by Ground and Air.....	25
Transportation of Dangerous Goods by Road in Europe (ADR).....	25
Hazardous Waste Manifest Training .....	25
California Hazardous Waste Management .....	26
New York Hazardous Waste Management .....	26
Texas Hazardous Waste Management .....	26
Advanced Hazardous Waste Management.....	26
Biennial Report and Quadrennial Renotification.....	27
Hazardous Waste Generator Improvements Rule .....	27
TSCA Import Requirements .....	27
Environmental Audits .....	27
EPCRA: Tier II Reports and Emergency Release Notifications .....	28
SARA Title III – How to Complete Form R TRI Reports .....	28
Environmental Regulations Overview .....	28
Stormwater Regulations.....	28
REACH, WEEE, and RoHS: How European Directives Impact U.S. Companies .....	28
HAZWOPER 8-Hour Refresher.....	29
OSHA GHS Hazard Communication Standard .....	29
OSHA Safety Regulations .....	29
Universal Waste.....	30
Hazardous Waste Land Disposal Restrictions .....	30
Used Oil and Special Waste .....	30
EPA's New Electronic Hazardous Waste Manifest.....	30
How to Comply with New Regulations for Hazardous Waste Pharmaceuticals.....	31
How to Manage a DOT Driver Compliance Program .....	31

<b>Online Training</b> .....	32
------------------------------	----

<b>Customized Online Training</b> .....	33
---	----

<b>On-Site Training</b> .....	34
-------------------------------	----

<b>Customized Webcasts</b> .....	35
----------------------------------	----

<b>Consulting</b> .....	36
-------------------------	----

# What customers are saying...

*“Great class! Very knowledgeable.”*

–Rudy Anderson  
Smithsonian Institution

*“Very knowledgeable instructor sets this course above the others!”*

–James Bartorelli  
Cone Health

*“One of the best instructors I’ve had, spoke well, easy to understand.”*

–Laura Meadows  
Exxon Mobil

*“The instructor was awesome! I also enjoyed the group activities!”*

–Lacey Brinkley  
Cadillac Products Packaging  
Company

*“Barry is positive and knowledgeable. The best I have attended!”*

–Maranda Britting  
DAK Americas

*“The instructor was extremely knowledgeable.”*

–Kashta Brandon  
Amazon

*“Andy’s energy and enthusiasm is awesome.”*

–Vincent Torricelli  
Aero Contractors Ltd.

*“Excellent break down of complicated material; great real life examples; speaker very engaging.”*

–Ken Brown  
INVISTA

*“Wonderful! Ten stars!”*

–Charles Matthews  
Summit Aviation

## About Environmental Resource Center

Environmental Resource Center is a full-service environmental, health, and safety consulting firm. We have been serving the needs of both industry and government agencies since 1981. Our goal is to help you effectively comply with environmental, health, safety, and transportation regulations.

## Benefits of Environmental Resource Center® Training

- **Course handbooks**—Comprehensive, up-to-date, and easy to understand
- Free **Handbook Update Service**—Updates are available online for one year.
- One year of free **Answerline™** service—If you have questions, an expert is only a phone call or e-mail away.
- **Certificate of Completion**—For your records
- **Free e-Mail Newsletters**—Reg-of-the-Day™ and Environmental and Safety Tips-of-the-Week™
- **Personalized User Portal**—Manage your training and find great tools to help you stay in compliance
- **Save**—When you register two people for a class at full price, each additional person attends that same class (date and location) for half price
- Training from a **Company Trusted** by leading companies and government agencies since 1981
- Earn **CEUs**, credits/points from the following organizations:
  - National Environmental Health Association
  - Kentucky Department for Environmental Protection
  - Indiana Department of Environmental Management  
Drinking Water/Waste Water
  - Ohio Waste Water/Drinking Water
  - California Registered Environmental Health Specialist (REHS) Program
  - New York State Department of Environmental Conservation
  - North Carolina Waste Water/Drinking Water

## Cancellation Policy

If you cancel or reschedule less than 7 days prior to a seminar, a fee of \$50 per seminar will apply. If you cancel on or after the date of the seminar, no refund will be given, however, you may reschedule your training within the next 12 months subject to a \$50 per seminar fee. We reserve the right to cancel any seminar and refund registration fees.

# Save with Annual and Corporate Subscriptions

## Annual Subscription

For one fixed price, you can attend all environmental and safety training classes offered by Environmental Resource Center for one full year.

Subscription price for both seminars and webcasts is \$2,900 and for webcasts only is \$1,900.

## Corporate Subscription

Pre-purchase seats at a discounted rate that can be used by your employees at any time for either seminars or webcasts.

Seats are available in lots of 10 at the following rates:

10 seats—\$4,000; 20 seats—\$7,500; 30 seats—\$10,750

40 seats—\$13,500; 50 seats—\$16,500

Please call for pricing for more than 50 seats.

**Call 800-537-2372 to begin your subscription.**

## 3 Easy Ways to Register



Online

<http://www.environmentalresourcecenter.com>



Email

[service@environmentalresourcecenter.com](mailto:service@environmentalresourcecenter.com)



Phone

800-537-2372

# Hazardous Waste Management: The Complete Course



*40 CFR 265.16, 262.16 and 262.17 require annual training for all personnel who handle hazardous waste.*

If you generate hazardous waste, you must comply with detailed regulatory requirements for waste characterization, container marking and labeling, waste minimization, manifesting, transportation, emergency response, and land disposal certification.

At this two-day class, you will learn how to properly identify, accumulate, minimize, and ship hazardous waste and gain an in-depth understanding of the latest regulatory requirements, including waste exemptions, exclusions, universal waste requirements, VOC standards for hazardous waste generators, and waste minimization. You will also learn RCRA emergency response requirements, how to comply with land disposal restrictions, rules for aerosol cans, and EPA's Hazardous Waste Generator Improvements Rule, which makes over 60 changes to the hazardous waste regulations.

## Course topics include:

- Definition of hazardous waste
- How to classify solid and hazardous waste
- Solid and hazardous waste variances for recycling
- How your state rules differ from federal regulations
- Hazardous waste exclusions
- Waste container selection
- Central accumulation area and satellite management
- VOC emission control requirements
- Pre-transport requirements
- How to complete the electronic manifest
- Land disposal restrictions
- Universal waste, used oil, CRTs
- Recordkeeping requirements
- Contingency plans and preparedness and prevention
- How to avoid the most common violations
- Shop towel, solvent recycling, and pharmaceutical waste rules

## Class Fee: Two Days \$795

Register two people for full price and the third and each additional person may attend this class, in the same city, for half price. Attend DOT Hazardous Materials Training (see page 10) the same week and save an additional \$100 on your registration fee, or receive electronic versions of both handbooks on an Amazon Fire HD 10 tablet. See [www.environmentalresourcecenter.com/terms](http://www.environmentalresourcecenter.com/terms) for terms and conditions.

Class hours: 8 a.m. to 5 p.m.

Registration begins at 7:30 a.m.

Lunch is provided both days. Vegetarian option available upon request.

## Your registration fee includes:

**Handbook for the Management of Hazardous Waste**—Complete guidance and instruction on hazardous waste management plus the latest regulations. Both print and electronic versions provided.

**State Update**—An overview of your state’s hazardous waste regulations that are different from the federal regulations

**Certificate of Completion**—For your records

**CEUs**—Earn 1.6 Continuing Education Units

## Cities We Visit

Columbia, SC

Tampa, FL

Macon, GA

Cary, NC

Birmingham, AL

Indianapolis, IN

Richmond, VA

Nashville, TN

Pittsburgh, PA

Spartanburg, SC

Chicago, IL

Knoxville, TN

Mobile, AL

Kansas City, MO

Charlotte, NC

Orlando, FL

New Orleans, LA

Charleston, SC

Philadelphia, PA

Atlanta, GA

Hilton Head, SC

Baton Rouge, LA

Dayton, OH

Greensboro, NC

Williamsburg, VA

Cleveland, OH

Baltimore, MD

St. Louis, MO

This course is also available online. See page 22.



# Texas Hazardous Waste Management

*40 CFR 265.16, 262.16 and 262.17 and 30 TAC 335.69(a)(4) require annual training for all personnel who handle hazardous waste in Texas.*

If your facility generates hazardous waste in Texas, you must comply not only with the Texas hazardous and industrial waste regulations but also with federal regulations that have not yet been incorporated into the Texas rules.

Topics covered include waste characterization, on-site management, land disposal restrictions, recordkeeping, P2 annual progress report, STEERS report, and universal waste. Learn the latest information on new rules that may affect your facility's hazardous waste management program at this interactive seminar.

## Course topics include:

- How TCEQ and RCRA regulations apply to your wastes
- How to classify solid and hazardous waste
- Classification of Texas Class 1, 2, and 3 wastes
- Waste container selection
- Central accumulation area and satellite management
- Pre-transport requirements
- Emergency response
- Universal waste, used oil, CRTs
- How to complete the electronic manifest
- Land disposal notices and certifications
- Recordkeeping and reporting requirements
- New and proposed rules

## Class Fee: Two Days \$795

Register two people for full price and the third and each additional person may attend this class, in the same city, for half price. Attend DOT Hazardous Materials Training (see page 10) the same week and save an additional \$100 on your registration fee, or receive electronic versions of both handbooks on an Amazon Fire HD 10 tablet. See <https://www.environmentalresourcecenter.com/terms> for terms and conditions.

## Cities We Visit

**Dallas, TX**

**Houston, TX**

**San Antonio, TX**

Class hours: 8 a.m. to 5 p.m.

Registration begins at 7:30 a.m.

Lunch is provided both days.

Vegetarian option available upon request.



# California Hazardous Waste Management

*40 CFR 265.16, 262.16 and 262.17 and 22 CCR 66265.16 require annual training for all personnel who handle hazardous waste in California.*

If your facility generates hazardous waste in California, you must comply not only with the California hazardous waste regulations but also with federal regulations that have not yet been incorporated into the California rules. Attend this two-day seminar and meet both the California and federal annual training requirements for generators of hazardous waste.

Topics covered include on-site hazardous waste management, tiered permitting, source reduction, and universal wastes. You will also learn the latest rules that will affect your facility's hazardous waste management program.

## Course topics include:

- How DTSC and RCRA regulations apply to your wastes
- California hazardous waste characterization procedures
- Federal rules that apply in California that are not in the California rules
- How to operate accumulation points and satellites
- Pre-transport requirements
- How to complete the electronic manifest
- Land disposal restrictions
- Emergency and release reporting
- New and proposed rules
- M-list mercury wastes
- California-only universal wastes
- Special waste and e-waste

## Class Fee: Two Days \$795

Register two people for full price and the third and each additional person may attend this class, in the same city, for half price. Attend DOT Hazardous Materials Training (see page 10) the same week and save an additional \$100 on your registration fee, or receive electronic versions of both handbooks on an Amazon Fire HD 10 tablet. See [www.environmentalresourcecenter.com/terms](http://www.environmentalresourcecenter.com/terms) for terms and conditions.

## Cities We Visit

**Ontario, CA**  
**Los Angeles, CA**  
**San Diego, CA**  
**Burbank, CA**

Class hours: 8 a.m. to 5 p.m.  
Registration begins at 7:30 a.m.  
Lunch is provided both days.  
Vegetarian option available upon request.

# DOT Hazardous Materials Training: The Complete Course

*49 CFR 172.704 requires training every three years, or as the regulations change, for employees who handle hazardous materials.*

The Department of Transportation (DOT) makes training mandatory for almost anyone who handles hazardous materials, regardless of the amount. Training is required for anyone who selects or fills packages containing hazardous materials, labels containers, completes or signs shipping papers, loads or unloads vehicles, or operates vehicles used to transport hazardous materials.

Receive your required training and learn how to comply with the latest regulations at this comprehensive seminar. DOT requires initial training and recurrent training every three years.

## Course topics include:

- How to classify hazardous materials
- Hazard class definitions
- How to select and prepare packages
- Package marks and labels
- How to load and unload
- Limited quantities and small quantities
- • Materials of trade
- How to complete shipping papers
- How to choose the correct DOT shipping name
- Special provisions and special permits
- Placarding
- Safety and emergency response
- Hazardous material security
- Recent changes in regulations
- Recordkeeping requirements
- Reporting requirements
- Who must register with DOT

## Class Fee: \$449

Register two people for full price and the third and each additional person may attend this class, in the same city, for half price. Attend the Hazardous Waste Management course (see page 6) the same week and save an additional \$100 on your registration fee, or receive electronic versions of both handbooks on an Amazon Fire HD 10 tablet. See [www.environmentalresourcecenter.com/terms](http://www.environmentalresourcecenter.com/terms) for terms and conditions.

Class hours: 8 a.m. to 5 p.m.  
Registration begins at 7:30 a.m.  
Lunch is provided. Vegetarian option available upon request.

This course is also available online. See page 22.

## Your registration fee includes:

**Hazardous Materials Management: How to Comply with DOT Requirements**—Step-by-step procedures for shipping hazardous materials plus the latest regulations. Both print and electronic versions provided.

**Emergency Response Guidebook, latest edition**

**Certificate of Completion**—For your records

**CEUs**—Earn 0.8 Continuing Education Units

## Cities We Visit

Macon, GA

Cary, NC

Dallas, TX

Ontario, CA

Birmingham, AL

Indianapolis, IN

Richmond, VA

Houston, TX

Nashville, TN

Pittsburgh, PA

San Antonio, TX

Los Angeles, CA

Spartanburg, SC

Chicago, IL

Knoxville, TN

Mobile, AL

San Diego, CA

Charlotte, NC

Orlando, FL

Burbank, CA

New Orleans, LA

Charleston, SC

Philadelphia, PA

Atlanta, GA

Hilton Head, SC

Baton Rouge, LA

Dayton, OH

Greensboro, NC

Williamsburg, VA

Cleveland, OH

Baltimore, MD

St. Louis, MO



# RCRA and DOT Annual Update and Refresher

*Get your RCRA and DOT refresher training in one day.*

This course is the perfect way to meet both your RCRA 40 CFR 265.16, 262.16 and 262.17 annual training and DOT 49 CFR 172.704 recurrent training requirements. Learn the important concepts and procedures required for compliance with hazardous waste (EPA/RCRA) and hazardous materials transport (DOT/HMTA) regulations. You'll also learn how to avoid the most common violations cited by EPA and DOT, as well as how to comply with new requirements that have been enacted, including EPA's hazardous waste generator improvements rule.

## Course topics include:

### DOT Hazardous Materials Management

- What is a hazardous material
- How to select packages, and ensure they are in good condition and properly closed
- How to mark, label, and placard packages and vehicles
- New size requirements for package marks
- How to prepare shipping papers
- How to load and segregate hazardous materials
- Requirements for lithium batteries and limited quantities
- Hazmat security awareness and plan requirements
- How to report hazardous materials incidents
- What's new in hazardous materials management
- DOT certification test

### RCRA Hazardous Waste Management

- Review and update of hazardous waste management requirements
- Satellite and central accumulation area requirements
- How to complete the electronic manifest
- Land disposal restrictions
- Used oil, universal waste, and recyclable waste
- Exclusions for hazardous waste recycling
- Relaxed rules for CRTs, e-waste, aerosol cans, and mercury-containing equipment
- Emergency Response: how and when to implement your contingency plan
- Recordkeeping and reporting requirements
- Hazardous Waste Generator Improvements Rule
- What's new in hazardous waste management

## Your registration fee includes:

**DOT/RCRA Compliance Manual**—Both print and electronic versions provided.

**State Update**—An overview of your state’s hazardous waste regulations that are different from the federal regulations

**Emergency Response Guidebook, latest edition**

**Certificate of Completion**—For your records

**CEUs**—Earn 0.8 Continuing Education Units

## Class Fee: \$549

Register two people for full price and the third and each additional person may attend this class, in the same city, for half price.

Class hours: 8 a.m. to 5 p.m.

Registration begins at 7:30 a.m.

Lunch is provided. Vegetarian option available upon request.

## Cities We Visit

Charlotte, NC

Atlanta, GA

Cary, NC

Indianapolis, IN

See pages 22–23 for online DOT and RCRA update training.



# IATA: How to Ship Dangerous Goods by Air

*Anyone involved in the transportation of dangerous goods by air is required to receive this initial and recurrent training.*

Gain an in-depth understanding of the regulations for the transportation of dangerous goods by air domestically and internationally, including the regulatory changes that have occurred in the past two years. Learn how to use the international regulations (International Air Transport Association—*IATA Dangerous Goods Regulations*) and extra requirements mandated by DOT (49 CFR 171 Subpart C). You will participate in hands-on exercises that will give you the opportunity to practice preparing dangerous goods for shipment using the *Dangerous Goods Regulations* (DGR) and will have opportunities to ask questions throughout the course.

IATA requires initial and recurrent training every two years. This course meets both initial and recurrent training requirements.

## Course topics include:

- Essential steps to take for compliance with IATA
- Explanation of how IATA relates to the International Civil Aviation Organization (ICAO) Technical Instructions
- How to identify State and Operator variations
- How to classify dangerous goods and select proper shipping names
- How to use the List of Dangerous Goods
- Finding Packing Instructions and identifying quantity limits
- Applying marks and labels to packages
- Preparing the Shipper's Declaration for Dangerous Goods shipping paper
- Requirements for limited and excepted quantities
- Emergency response information and security awareness as required by DOT

## Class Fee: \$449

Register two people for full price and the third and each additional person may attend this class, in the same city, for half price.

Class hours: 8 a.m. to 5 p.m.

Registration begins at 7:30 a.m.

Lunch is provided.

Vegetarian option available upon request.

# DOT/IATA: How to Ship Dangerous Goods by Ground and Air

*Get certified for both DOT and IATA in one day.*

The Department of Transportation (49 CFR 172.704) and the International Air Transport Association (IATA DGR 1.5) make training mandatory for almost anyone who handles hazardous materials or dangerous goods, regardless of the amount. Employees who select or fill packages, label containers, complete shipping papers, load or unload vehicles, transload hazardous materials, or operate vehicles used in the transport of hazardous materials or dangerous goods must be trained and tested. DOT requires training every three years for ground shipments of hazardous materials, and IATA requires training every two years for air shipments of dangerous goods.

## Course topics include:

- How to classify and prepare hazardous materials/dangerous goods for shipment
- Essential steps for compliance with DOT and IATA regulations
- How to use the DOT Hazardous Materials Table and IATA List of Dangerous Goods
- Excepted quantities and limited quantities
- How to prepare shipping papers
- How to select, fill, and close packages
- Package marks and labels
- How to load, unload, and placard
- Safety and security
- Recent changes in the DOT and IATA regulations

## Class Fee: \$549

Register two people for full price and the third and each additional person may attend this class, in the same city, for half price.

Class hours: 8 a.m. to 5 p.m.

Registration begins at 7:30 a.m.

Lunch is provided.

Vegetarian option available upon request.

# SARA Title III (EPCRA) Workshop

*Are you in compliance with EPCRA requirements?*

SARA Title III (Emergency Planning and Community Right-to-Know) requires you to notify the State Emergency Response Commission (SERC), your Local Emergency Planning Committee (LEPC), and your local fire department regarding the hazardous materials used at your facility. This course will enable you to identify which materials at your site must be reported under SARA Title III, the amounts of these materials that trigger reporting, and how to meet your reporting obligations. Learn the actions you must take in the event of a release at your facility. You will also learn how to complete the emergency notification and planning requirements, how to report releases that may occur at your facility, and how to complete Tier II forms and Toxic Release Inventory (TRI) forms, including both Form A and Form R reports.

## Course topics include:

- Emergency planning requirements
- Release notification requirements
- How to complete Tier II, Form A, and Form R reports
- How to use the federal SARA reporting software
- How to determine and distinguish the chemicals you must report on your Form R, Form A, and Tier II
- Do any of your chemicals qualify for exemptions?
- Reporting procedures for each section of SARA Title III
- Recent deletions from the TRI chemical list
- Reporting procedures for mixtures
- When and how to update EPCRA information

## Class Fee: \$449

Register two people for full price and the third and each additional person may attend this class, in the same city, for half price.

Class hours: 8 a.m. to 5 p.m.

Registration begins at 7:30 a.m.

Lunch is provided. Vegetarian option available upon request.

**Do you need help completing your Tier II reports in time for the March deadline? Call 800-537-2372 or email [service@environmentalresourcecenter.com](mailto:service@environmentalresourcecenter.com) for a quote on our SARA Title III consulting services.**



**Your registration fee includes:**

**How to Comply with the Emergency Planning and Community Right-to-Know Act**—Includes step-by-step procedures for compliance with the latest EPCRA requirements, including TPQ notification, SDS submission, Tier II reports, Toxic Chemical Release Inventory reports (Form A and Form R), and emergency notification requirements. Also included is a compendium of your state's specific emergency planning and community right-to-know requirements. Both print and electronic versions provided.

**Certificate of Completion**—For your records

**CEUs**—Earn 0.8 Continuing Education Units



# Advanced Hazardous Waste Management

*Fulfill your annual training requirement at this one-day seminar that goes beyond the basics.*

This challenging course will take you beyond the basics by delving into EPA's interpretations on the most daunting gray areas. Advanced Hazardous Waste Management is designed for those with prior RCRA training. This class covers much more than the regulatory requirements while meeting your annual training requirement.

You will learn which of your wastes are exempt or excluded that you may currently be managing as hazardous, which wastes do not count toward your generator status, how to handle episodic generation, requirements for importing and exporting hazardous waste, when permits are required and when treatment is allowed without a permit, how to minimize waste, and land disposal restrictions. Learn the latest regulatory changes and emerging issues that will affect your facility, including hazardous waste secondary materials being recycled, pharmaceutical waste, LQG quick reference guides, the electronic manifest, and managing and treating aerosol cans under the new universal waste regulations.

## Course topics include:

- New and pending regulations
- How to classify hazardous waste using information you won't find in the regulations
- Universal waste and used oil
- Exercises and case studies
- Container and tank emission controls
- Hazardous secondary materials
- Exemptions for remanufacturing solvents
- Which exemptions and exclusions can save you money
- How new and proposed regulations will affect your site
- Hazardous Waste Generator Improvements Rule

## Class Fee: \$499

Register two people for full price and the third and each additional person may attend this class, in the same city, for half price.

Class hours: 8 a.m. to 5 p.m.

Registration begins at 7:30 a.m.

Lunch is provided. Vegetarian option available upon request.

**Your registration fee includes:**

**Advanced Hazardous Waste Management**—Both print and electronic versions provided.

**State Update**—An overview of your state’s hazardous waste regulations that are different from the federal regulations

**Certificate of Completion**—For your records

**CEUs**—Earn 0.8 Continuing Education Units



# HAZWOPER 24-Hour and 40-Hour Workshops and 8-Hour Refresher

*Do your site cleanup and emergency response personnel have this mandatory training?*

Meet your OSHA HAZWOPER training requirements with these comprehensive classes. Get the in-depth training you need to perform emergency response and cleanup activities. 29 CFR 1910.120(e) requires 40 hours of initial HAZWOPER training for hazardous waste site cleanup workers. 29 CFR 1910.120(q)(6) requires that employees who will stop, contain, and clean up hazardous substance releases in emergency response situations receive 24 hours of training.

Apply course knowledge and demonstrate competence in proper hazardous material response activities when you participate in group tabletop exercises and hands-on simulations using real-life scenarios.

## Course topics include:

### 24-Hour

- Emergency response communication
- Emergency planning and organization
- Incident Command System roles
- Medical surveillance
- Hazardous substance terminology and behavior
- Hazard recognition and risk assessment
- Use of field survey equipment
- Personal protective equipment (PPE) selection and use
- Control, containment, and confinement techniques
- Decontamination
- Termination procedures

### 40-Hour

- Hazardous substance and radiological terms and behavior
- Work environment hazards
- Hazard recognition and risk assessment techniques
- Safety and health program requirements
- Medical surveillance
- PPE selection and use
- Safe work practices
- Safe use of engineering controls and equipment
- Handling drums and containers
- Emergency response plan
- Spill containment
- Confined space entry
- Decontamination procedures

Already have your 40- or 24-hour training? Satisfy your annual training requirement and get the refresher you need to be ready to respond at this 8-hour refresher course.

### **8-Hour refresher course topics include:**

- Regulatory requirement update
- Emergency planning, organization, and communication
- Hazardous substance and radiological terms and behavior
- Medical surveillance/safety and health program requirements
- Hazard recognition and risk assessment
- PPE selection and use
- Review of safe work practices, container handling, and equipment use
- Air and contaminant monitoring
- Control, containment, and confinement techniques
- Decontamination
- Confined space entry update

HAZWOPER classes are held at Environmental Resource Center in Cary, NC.

### **Class Fee:**

\$549 for the 24-hour class

\$749 for the 40-hour class

\$399 for the 8-hour refresher

Class hours: 8 a.m. to 5 p.m.

Registration begins at 7:30 a.m.

Refresher training is also available online. See page 29.



*Enjoy live, interactive training from your office or conference room.*

## **DOT Hazardous Materials Training: The Complete Course \$429\***

Learn how to classify, mark, label, document, and ship hazardous materials in accordance with the latest DOT Regulations. This interactive course meets your DOT 49 CFR 172.704(c)(1) initial training and testing requirements.

## **DOT Hazardous Materials Update \$399\***

This interactive course meets your DOT 49 CFR 172.704(c)(2) recurrent training and testing requirements. Learn about the latest DOT regulations applicable to classifying, packaging, marking, labeling, and shipping hazardous materials.

## **Hazardous Waste Management: The Complete Course \$599\***

In this interactive course, you will gain the knowledge you need to manage hazardous waste in accordance with the latest regulatory requirements. While meeting your 40 CFR 265.16, 262.16, and 262.17 training requirements, you will learn how to properly classify and accumulate hazardous waste, how to ensure your waste containers meet EPA and DOT requirements, how to avoid hazardous waste manifest errors, and how you must prepare for and respond to emergencies. You will also have the opportunity to ask questions regarding your site-specific waste management procedures.

## **Hazardous Waste Management Annual Update \$399\***

Meet your mandatory RCRA training without having to leave your office. In addition to gaining insight about recent changes in the regulations, you will learn how to determine which wastes are hazardous, how to properly accumulate waste on-site, how to prepare waste for off-site shipment, how to respond in an emergency and what should be reported, and how to prepare hazardous waste manifests and land disposal notices.

\*Per student.

Register two attendees for the same webcast (course and date) at full price and each additional person attends for half price.

**Course materials are delivered electronically in an easy to use format.**

## **RCRA and DOT Annual Update and Refresher Training \$549**

This course is the perfect way to meet both your RCRA 40 CFR 265.16 annual review and DOT 49 CFR 172.704(c)(2) recurrent training requirements. During this one-day class, you will review the important concepts and procedures required for compliance with hazardous waste (EPA/RCRA) and hazardous materials transport (DOT/HMTSA) regulations. You'll also learn how to avoid the most common violations cited by EPA and DOT, as well as how to comply with new requirements that have been enacted over the past year.

## **IATA: How to Ship Dangerous Goods by Air \$429\***

This course will provide you with an in-depth look and practical experience in the domestic and international regulations governing the transportation of dangerous goods (hazardous materials) by air. You will learn how to determine which materials are classified as dangerous goods, how to select and prepare packages, how to mark and label packages, as well as how to prepare excepted quantities and limited quantities for transport by air. You will also learn how to prepare the IATA Shipper's Declaration for Dangerous Goods. Get the tools you need to comply with the international regulations within the guidelines of the DOT Hazardous Materials Regulations and avoid rejected shipments and FAA fines. This course meets your initial and recurrent training requirements.

## **IATA Dangerous Goods Update \$399\***

If you ship dangerous goods by air, you must be trained and tested at least every two years. In this session, you will meet your recurrent training and testing requirements while learning the latest regulatory changes that have occurred in the past two years. You will learn the differences between domestic and international regulations and the latest requirements for packaging, marking, labeling, and shipping papers.

# Live Webcast Training

*Ask your instructor questions at any time.*

## **DOT/IATA: How to Ship Dangerous Goods by Ground and Air \$479\***

If you ship hazardous materials/dangerous goods by ground and air, this course is an ideal way to meet both your Department of Transportation (49 CFR 172.704) and the International Air Transport Association (IATA DGR 1.5) training requirements. Employees who select or fill packages, label containers, complete shipping papers, or load or unload vehicles used in the transport of hazardous materials or dangerous goods must be trained and tested in accordance with the DOT Hazardous Materials Regulations and the *IATA Dangerous Goods Regulations*.

## **How to Ship Dangerous Goods by Vessel – IMDG \$399\***

This course will teach you how to prepare dangerous goods for shipment by vessel using the International Maritime Organization's IMDG Code. Learn how to classify, package, mark, label, and placard dangerous goods for vessel shipment. You will also learn the unique requirements for flammables, how to identify environmentally hazardous substances (aquatic environment), and how to prepare transport documents. This course meets initial and recurrent training requirements.

## **How to Ship Infectious Substances by Ground and Air \$399\***

This course will guide you through the unique requirements for the transportation of infectious substances. You will learn how to classify infectious substances; how to select and prepare triple-packaging systems; how to mark, label, and document infectious substances for shipment by ground or air; and how to comply with regulations concerning shipments of infectious substances under the *IATA Dangerous Goods Regulations*.

\*Per student.

Register two attendees for the same webcast (course and date) at full price and each additional person attends for half price.

**Course materials are delivered electronically in an easy to use format.**



## **How to Ship Batteries by Ground and Air \$399\***

If you ship batteries by ground or air, you must comply with stringent DOT or IATA regulations on how the batteries are packaged, marked, labeled, and transported. The rules for packaging lithium batteries packed with equipment have been updated and more restrictions have been placed on air shipments of lithium batteries being shipped alone. Learn how to prepare various types and configurations of battery shipments for both ground and air transportation. This webcast meets DOT's hazmat employee training requirements for personnel who ship batteries.

## **Transportation of Dangerous Goods by Road in Europe (ADR) \$399\***

If you ship dangerous goods by ground within Europe you must comply with ADR (Accord European Relatif au Transport International des Marchandises Dangereuses par Route) requirements for those shipments. In this course you will learn how to use the 2-volume ADR European Agreement Concerning the International Transport of Dangerous Goods by Road; how to classify, describe, package, mark, label, placard, and document shipments of dangerous goods by ground within Europe; and the differences between the ADR regulations and the DOT, IATA, and IMO regulations.

## **Hazardous Waste Manifest Training \$399\***

When hazardous waste is shipped from your site, it must be accompanied by a hazardous waste manifest. Even if your waste transporter fills out the manifest, you are responsible for the portions of the manifest that they complete on your behalf. Because the manifest is a Department of Transportation (DOT) hazardous material shipping paper, anyone who fills out or signs the manifest must be trained and tested in the DOT's required topics: general awareness, function-specific, safety and security. This live, online training is designed to satisfy the training requirements for anyone who completes or signs hazardous waste manifests.

# Live Webcast Training

*Connecting is simple.*

## **California Hazardous Waste Management \$599\***

If your facility generates hazardous waste, you must comply not only with the California hazardous waste regulations, but also with federal regulations that have not yet been incorporated into the DTSC rules. Learn how to determine which wastes are classified as EPA and California hazardous waste, how to properly manage your wastes at accumulation points and satellite accumulation points, and recent changes in the hazardous waste regulations that can affect your facility's hazardous waste management program.

## **New York Hazardous Waste Management \$599\***

If you generate hazardous waste in New York, you must comply with both EPA and New York Department of Environmental Conservation (DEC) regulations. Learn how to determine which wastes are hazardous and how to manage hazardous waste under the EPA and DEC requirements as well as how to comply with the latest manifest, recordkeeping, and reporting requirements.

## **Texas Hazardous Waste Management \$599\***

If your facility generates, accumulates, treats or disposes of hazardous waste in Texas, you must comply with both EPA and the Texas Commission of Environmental Quality (TCEQ) regulations. Learn how to classify hazardous waste, how to manage hazardous waste in accordance with EPA and TCEQ regulations, the requirements for central and satellite accumulation areas, and how to complete STEERS reports.

## **Advanced Hazardous Waste Management \$399\***

If you have had previous RCRA training, you are ready to go beyond the basics and delve into EPA's interpretations on the most daunting gray areas of hazardous waste management. Learn which wastes are exempt from hazardous waste requirements and gain a better understanding of handling episodic generation, importing and exporting hazardous waste, and minimizing waste generation.

\*Per student.

Register two attendees for the same webcast (course and date) at full price and each additional person attends for half price.

**Course materials are delivered electronically in an easy to use format.**

## **Biennial Report and Quadrennial Renotification \$129**

Large quantity generators are required to submit a report on March 1st of even numbered years outlining site hazardous waste activities during the preceding year. As of September 1, 2021, small quantity generators must submit a renotification confirming or updating their generator status and reporting on their waste activities. In this webcast you will learn how to complete the required Notification of Resource Conservation and Recovery Act (RCRA) Subtitle C Activities (Site Identification Form 8700-12) and the biennial report (EPA form 8700-13), including where to look for data on your wastes, which wastes must be counted, and which wastes do not need to be reported.

## **Hazardous Waste Generator Improvements Rule \$129\***

EPA recently finalized the first major modifications to the hazardous waste regulations in over 30 years. Learn how to comply with over 60 changes and new requirements established by the Hazardous Waste Generator Improvements Rule. In this webcast you will learn the new requirements for documenting hazardous waste determinations; how to take advantage of the episodic generation exclusion to avoid reclassification to a larger generator status; definitions of important new terms; and how to mark containers, tanks, and containment buildings with new information required at central accumulation areas and satellites.

## **TSCA Import Requirements \$129\***

TSCA Section 13 requires that any chemical substance, mixture, or article containing a chemical substance or mixture be refused entry into the U.S. if it fails to comply with TSCA. EPA requires importers to certify that their chemical substances or mixtures are either in compliance with TSCA Sections 5, 6, and 7 at the time of import or that they are not subject to TSCA. Learn how to meet TSCA import requirements at this interactive webcast.

## **Environmental Audits \$399\***

Anyone responsible for conducting audits or preparing facilities to be audited will benefit from this webcast. Learn how to assess compliance with federal, state, and local requirements; how to organize the audit process and prepare an effective audit report; and what to do with the results. This class also addresses the auditor's responsibilities, the facility's responsibilities, and how to monitor corrective action.

# Live Webcast Training

*Enjoy live, interactive training from your office or conference room.*

## **EPCRA: Tier II Reports and Emergency Release Notifications \$399\***

Learn what is covered by the Emergency Planning and Community Right-to-Know Act. Topics include how to identify and accurately report OSHA hazardous chemicals, CERCLA hazardous substances, and extremely hazardous substances at your facility. You will also learn how to determine whether the Tier II inventory reporting requirements apply to your site and how to complete the form.

## **SARA Title III – How to Complete Form R TRI Reports \$399\***

Learn how to determine if you must complete the Form R and whether you qualify for any exemptions, how to complete and document your 313 threshold determination, and how to identify releases at your facility. You will also learn the latest changes to the Section 313 requirements.

## **Environmental Regulations Overview \$399\***

This course will provide you with an understanding of major U.S. environmental laws and regulations. Learn how to determine which laws and regulations apply to your facility and how to maintain compliance. Major emphasis is placed on the statutes that affect most facilities, including the Clean Air Act, Clean Water Act, RCRA, CERCLA, EPCRA, and TSCA.

## **Stormwater Regulations \$399\***

Learn how to comply with industrial and construction stormwater management regulations at this interactive webcast. In addition to receiving an overview of stormwater regulations, you will learn how to obtain a permit for stormwater discharges, how to identify which permits are available for your facility, how to develop an effective SWPPP, what BMPs you must implement, and how to develop and implement an effective sampling plan.

## **REACH, WEEE, and RoHS: How European Directives Impact U.S. Companies \$129\***

U.S. companies that export products to Europe are finding that they must comply with a myriad of regulations that are significantly different and more stringent than U.S. regulations. Learn about the major European environmental regulations, how they impact your business, and steps to take to ensure compliance.

### **HAZWOPER 8-Hour Refresher \$399\***

The Hazardous Waste Operations and Emergency Response (HAZWOPER) rule regulates emergency response to hazardous substances. If you've had your 40- or 24-hour training, this interactive class is a great way to meet your annual training requirement.

### **OSHA GHS Hazard Communication Standard \$399\***

Receive in-depth training on OSHA's Hazard Communication Standard (29 CFR 1910.1200) and the United Nation's Globally Harmonized System (GHS) for the classification and labeling of hazardous chemicals. You will learn the requirements for hazardous chemical labels, Safety Data Sheets (SDSs), and written hazard communication plans, how to classify hazardous chemicals, what chemicals are exempt, and how to implement an effective hazard communication program. You'll also learn about OSHA's proposal to adopt the seventh revision to GHS that will make significant changes to hazard classification, labels, and SDSs.

### **OSHA Safety Regulations \$399\***

This course is designed to give you an overview of the critical OSHA general industry regulations and help you determine which standards apply to your facility. Course topics include hazard communication, PPE, confined space, lockout/tagout, and HAZWOPER. Recordkeeping, reporting, and training requirements are also covered.

\*Per student.

Register two attendees for the same webcast (course and date) at full price and each additional person attends for half price.

**Course materials are delivered electronically in an easy to use format.**

# Live Webcast Training

*Ask your instructor questions at any time.*

## **Universal Waste \$129\***

Does your facility generate any waste batteries, light bulbs, thermostats, mercury-containing equipment, aerosol cans, or pesticides? If so, any personnel who handle these wastes must be trained to properly manage them and to know what to do in an emergency. Moreover, many states classify additional wastes as universal wastes, such as paint, electronic waste, and antifreeze. Learn how to classify, store, and prepare universal wastes for off-site shipment and how to respond to and manage universal waste releases.

## **Hazardous Waste Land Disposal Restrictions \$129\***

Unless you have studied the complex land disposal restrictions in depth, you may not be making the proper notice or certification that must be provided to your hazardous waste treatment, storage, and disposal facilities (TSDFs). Many waste generators rely on their TSDFs to complete these notifications; however, the generator is responsible for any errors. Learn which wastes are subject to the LDRs and how to develop an accurate notice or certification.

## **Used Oil and Special Waste \$129\***

While subject to the Resource Conservation and Recovery Act, used oil, precious metals, lead-acid batteries, radioactive mixed waste, and hazardous waste fuels have somewhat relaxed requirements. Learn how to manage these wastes properly and how these wastes can become fully regulated hazardous wastes if they are mishandled.

## **EPA's New Electronic Hazardous Waste Manifest \$129\***

EPA has implemented a new electronic hazardous waste manifest. With the new manifest, waste generators, transporters, brokers, and emergency responders are facing new challenges. In this session, you will learn who is responsible for manifest content, what new information is required, how the manifest is signed, what information is available to the public and emergency responders, how state-only hazardous waste and PCBs are identified, impacts on waste imports and exports, how corrections to waste quantities and shipping descriptions are identified, and the user fees.

\*Per student.

Register two attendees for the same webcast (course and date) at full price and each additional person attends for half price.

## **How to Comply with New Regulations for Hazardous Waste Pharmaceuticals \$129\***

The EPA has finalized new rules for pharmaceutical waste. These regulations provide less stringent requirements for waste pharmaceuticals at healthcare facilities. In this webcast you will learn what types of pharmaceuticals qualify for the rule, which facilities can take advantage of the rule, and step-by-step procedures for compliance.

## **How to Manage a DOT Driver Compliance Program \$129\***

Did you know that at least 9 different records are required in every driver's qualification file, and that each of these records must be retained for a specific amount of time? Do your drivers know when they must report an illness or disclose their own personal motor vehicle violations? Get answers to these and other challenging questions in this live, online course that's designed for anyone who manages a DOT Driver Compliance Program.





After creating customized computer based training for many of the country's largest corporations, Environmental Resource Center is making its popular computer based training available to the public.

Environmental Resource Center's online training allows you to learn at your own pace, when it's convenient for you. The courses make it easy to learn how to comply with the latest regulations that can impact your facility. The computer based training programs are interactive and engaging, designed by Environmental Resource Center's expert consultants.

Our support of your compliance doesn't end after you complete the training. Participants in Environmental Resource Center's online training can call our Answerline™ for immediate answers to questions that relate to the subject matter of their training.

## Online Courses Currently Available Include:

- Hazardous Waste Management: The Complete Course
- DOT Hazardous Materials Training
- How to Ship Batteries by Ground and Air
- How to Ship Dry Ice by Ground and Air
- How to Ship Consumer Commodities and Limited Quantities by Ground and Air
- How to Ship Bulk Hazardous Materials by Ground
- How to Ship Infectious Substances by Ground and Air
- How to Ship Medical Waste
- How to Manage Used Oil
- How to Manage Universal Waste
- Reverse Logistics Shipments of Hazardous Materials
- EPCRA: Tier II Reports and Emergency Release Notifications
- OSHA GHS Hazard Communication Standard
- How to Work Safely with Bloodborne Pathogens
- Alternative Standards for Episodic Hazardous Waste



# Customized Online Training

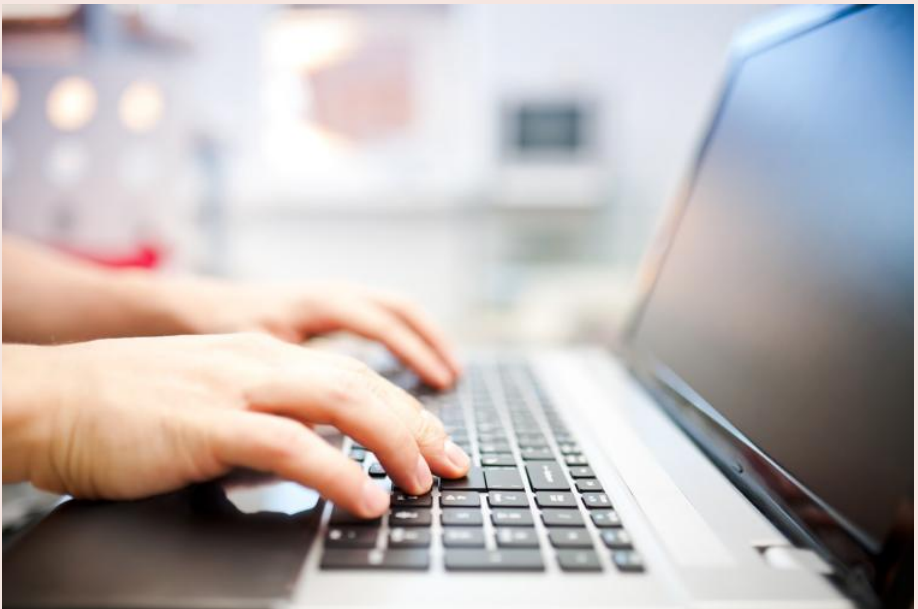
With Environmental Resource Center's customized online training, your employees will come away with the knowledge they need to perform their jobs in compliance with the applicable regulations.

You can host your customized computer based training on your company's learning management system or Environmental Resource Center will host it for you.

Your employees will have access to the training they need, anytime day or night in any convenient location. Contact Amy Knight at 800-537-2372, Ext. 224, or [aknight@environmentalresourcecenter.com](mailto:aknight@environmentalresourcecenter.com) for more information.

Popular topics include:

- DOT Hazardous Materials
- Hazardous Waste
- IATA Transportation of Dangerous Goods by Air
- IMDG Transportation of Dangerous Goods by Water
- How to Ship Lithium Batteries
- Stormwater Pollution Prevention
- SPCC Plans
- OSHA Hazard Communication



# On-Site Training

## Can't come to us? We'll come to you!



Any of our excellent courses can be delivered at your facility, or we can develop a program that is specific to your needs. We can help you assess the training your employees are required to have, develop a customized training program that focuses on their needs, and deliver the training at your location. Environmental Resource Center's on-site training also includes hands-on instruction and exercises that incorporate your facility's materials and procedures.

With Environmental Resource Center's on-site training, you can be assured that your employees will come away with the knowledge and skills they need to perform their jobs in compliance with the applicable regulations. We deliver on-site training around your time schedule and at your facilities. By traveling to your facilities, we can train all of your employees, sparing you the travel expenses of sending your employees to remote locations.

On-site class participants receive the same benefits as our seminar and webcast attendees, including:

- Comprehensive handbooks detailing how to comply with the latest regulatory requirements
- Certificates of completion for your records
- Free handbook updates for one year
- Free Answerline™ service for one year

On-site training is an efficient and economical way to train your employees, and it reduces time away from the job. To schedule your on-site training call 800-537-2372 or email [service@environmentalresourcecenter.com](mailto:service@environmentalresourcecenter.com).

*"Environmental Resource Center is some of the best training out there! Highly knowledgeable, very engaging, kept people interested. The personalized, customized training was well worth it."*

– David Nye  
Polyset

*"Excellent! It covered what pertains to our site."*

–Ron Bell  
McLane Foodservice

# Customized Webcasts

Environmental Resource Center's customized, interactive webcast training is the perfect choice for companies with employees at multiple sites or a need to save on travel expenses.

We will customize your webcast training to address your company-specific operations, procedures, and examples, resulting in effective training for your employees. Your employees and your company operations will benefit when the training provided is specific to your company's operations.

Benefits include those enjoyed by our seminar attendees, plus:

- Covers the combination of training topics you need—Let us help you assess your training needs to select the topics that will be included in your customized webcast training.
- Flexible scheduling—Do you need more than one session or multiple short sessions to accommodate multiple shifts or time zones?
- Information presented in the training focuses on your site operations
- Webcast training is time- and cost-efficient because it brings the classroom to you, without travel costs

Call 800-537-2372 or email [service@environmentalresourcecenter.com](mailto:service@environmentalresourcecenter.com) to schedule customized webcast training to meet your company's needs.





**Environmental Resource Center**® offers a full range of expert consulting services to help you comply with federal and state environmental, health, safety, and transportation regulations.

Our highly experienced team and attention to detail will give you the same peace of mind that it has for thousands of satisfied clients, such as Pfizer, the U.S. Navy, Amazon, Stericycle, Marathon Petroleum, Nordson, Lockheed Martin, Mack Trucks, Chevron, the New York Department of Environmental Protection, Merck, Eaton, BMW, Columbia University, Corning, and the U.S. EPA.

## Audits

By conducting a thorough assessment of your facility, Environmental Resource Center will identify areas of potential non-compliance that you can address before an EPA, OSHA, or DOT inspection. EPA may reduce or even waive penalties for violations that are voluntarily found, reported, and corrected.

## On-Site EHS Management

Outsourcing some or all of your environmental, health, and safety responsibilities allows you to focus on your core business while reducing operating costs and increasing compliance. We can provide you with continuous or on-demand on-site support. Team members at your site will be backed by the full support and experience of the entire Environmental Resource Center staff.

## Plans and Procedures

EPA, OSHA, and DOT require a vast number of written plans and procedures. Environmental Resource Center can evaluate your facility to determine which are applicable to your operations and then develop the required plans and procedures for you.

Call 800-537-2372 or email [service@environmentalresourcecenter.com](mailto:service@environmentalresourcecenter.com) to learn how we can help you address your compliance challenges.

## EHS Learning Management System

Let Environmental Resource Center host or create content for your EHS learning management system. With our HELP™ (Health and Environmental Learning Program) system, we can create, administer, and track online, computer-based, and instructor-led environmental and safety training for your employees worldwide.

## SARA Title III Compliance and Reporting

If you use OSHA hazardous chemicals, extremely hazardous substances, or Section 313 toxic chemicals, you are required to comply with the Emergency Planning and Community Right-to-Know Act (EPCRA). Let Environmental Resource Center help you determine your reporting requirements and assist with your Tier II, Form R, and Form A reports.

## DOT/IATA/IMO Classification

Shipping a hazardous material or dangerous good that is not properly classified, marked, labeled, and documented can result in stiff fines. With more than 16,000 entries in DOT's Hazardous Materials Table, determining how your product is subject to the regulations may not be so easy. Moreover, relaxed regulations apply for certain materials, but only under specific circumstances. Our experts in domestic and international regulations for the transport of hazardous materials will help you determine which products are subject to the regulations and how to comply.

## HazMat Database

Environmental Resource Center can create a customized, searchable website for your company that will allow your hazmat employees to find the proper shipping name, choose an approved package, identify which marks and labels are required, and print shipping papers for any hazardous material shipped by any mode of transportation worldwide.

## Answerline™ Service

Need an answer to a complicated environmental, transportation, or safety question? We can answer nearly every environmental, health, safety, and transportation question that may arise for an hourly fee of \$155/hour (billed in 15 minute increments). Based on your needs, we'll provide you with a quick verbal answer or a comprehensive report. Get answers to questions on federal and state regulations as well as practical guidance on how to comply.



## ***Environmental Resource Center®***

101 Center Pointe Drive  
Cary, North Carolina 27513-5706  
800-537-2372

### **What Customers Are Saying...**

*"Excellent instructor, excellent presentation."*

—Michael Hooks  
NASA

*"Great course! Completely satisfied."*

—Julie Sikes  
Gibraltar Packaging Group

*"Best yet!"*

—Victor Barefoot  
Domtar Paper Company

**[www.environmentalresourcecenter.com](http://www.environmentalresourcecenter.com)**

To update or remove your address, email [service@environmentalresourcecenter.com](mailto:service@environmentalresourcecenter.com).  
Please allow 12 weeks for processing.

Brochure Code: NBNU22